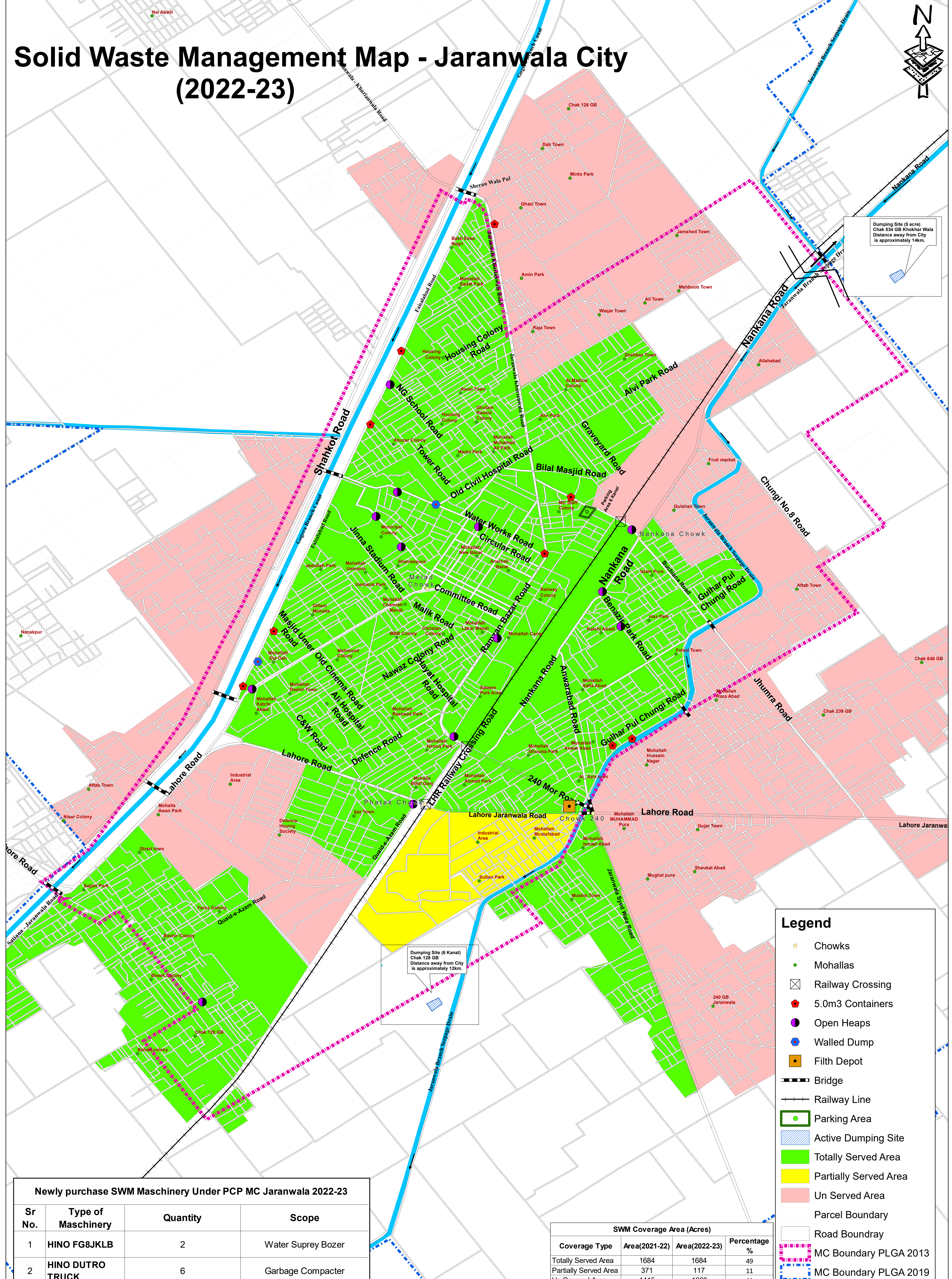
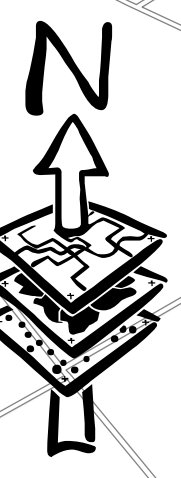


Solid Waste Management Map - Jaranwala City (2022-23)



Dumping Site (5 acre)
Chak 534 GB Khokhar Wala
Distance away from City
is approximately 14km.

Dumping Site (6 Kanal)
Chak 128 GB
Distance away from City
is approximately 12km.

Newly purchase SWM Maschinery Under PCP MC Jaranwala 2022-23

Sr No.	Type of Maschinery	Quantity	Scope
1	HINO FG8JKLB	2	Water Suprey Bozer
2	HINO DUTRO TRUCK	6	Garbage Compacter

SWM Coverage Area (Acres)

Coverage Type	Area(2021-22)	Area(2022-23)	Percentage %
Totally Served Area	1684	1684	49
Partially Served Area	371	117	11
Un Covered Area	1415	1669	41

Legend

- Chowks
- Mohallas
- ⊠ Railway Crossing
- ⬢ 5.0m3 Containers
- Open Heaps
- Walled Dump
- Filth Depot
- Bridge
- Railway Line
- Parking Area
- ▨ Active Dumping Site
- Totally Served Area
- Partially Served Area
- Un Served Area
- Parcel Boundary
- Road Boundray
- MC Boundary PLGA 2013
- MC Boundary PLGA 2019